



franck  
herval  
BIJOUX

COLLECTION 24.2

## **Un lieu, un instant, mon bijou**

Imagines par Manuelle, une créatrice pétillante, et réalisés à la main par notre équipe d'artisans de talent, les bijoux Franck Herval sont nés du savoir-faire exclusif d'un confectionneur de bijoux, à la fois créateur et fabricant.

Son inspiration ? L'air du temps ! Ses valeurs ? La passion et le partage.

C'est ainsi que Manuelle s'attache toujours à proposer un style multi facettes qui combine les harmonies, les styles, les matières et les influences. À travers ses collections, elle garde à cœur de créer avec simplicité des bijoux qui, au fil des lieux, prennent vie dans notre quotidien, pour en sublimer chaque instant !

## **A place, a moment, my jewellery**

Born of the expertise of long-established jewellery creators and manufacturers, the French brand Franck Herval is designed by Manuelle, and handmade by a highly skilled team of Artisans. Our inspiration is to capture the moment and share this passion with today's woman.

By mixing and combining styles and influences, Franck Herval has created a multifaceted collection which allows you to choose your individual sense of style... to share your life whatever the place, whatever the moment.







# Aurore

Coquillage capiz - *Capiz shell*  
Swarovski  
Laiton - *Brass*



12--69163  
7.7 g - 8.5 cm



15--64203  
6.15 g - 40 cm



12--69167  
6.3 g - 5.5 cm



12--69171  
3.25 g - 4.5 cm



12--69164  
3.2 g - 4.5 cm



12--69165  
2.9 g - 3.5 cm



13--72781  
3.9 g - 16.5 cm



13--72782  
5.25 g - 16.5 cm



13--72783  
4.1 g - 16.5 cm



12--69170  
8.4 g - 4.5 cm



12--69168  
8.3 g - 5 cm



15--64201  
4.95 g - 40 cm



19--63560  
3.1 g



15--64200  
4.85 g - 42 cm



12--69162  
5.1 g - 7 cm



12--69161  
6.1 g - 6 cm



12--69169  
3.5 g - 3.3 cm





# Baya

- Amazonite
- Aigue marine - Aqua marine
- Perles de verre - Glass bead
- Noix de coco - Coconut
- Perles de culture - Pearls
- Os - Bone
- Swarovski
- Laiton - Brass



12--68979  
12.65 g - 8.5 cm



15--64140  
13.1 g - 40 cm



19--63490  
3 g



19--63491  
3.15 g



12--68976  
17.35 g - 4.5 cm



12--68974  
8.95 g - 6 cm



12--68975  
14 g - 6.5 cm



12--68970  
7.15 g - 5 cm



12--68973  
16.8 g - 4 cm



15--64142  
9.75 g - 45 cm



13--72700  
7.55 g - 17 cm



13--72701  
8.8 g - 13.5 cm



15--64143  
5 g - 38 cm



12--68978  
5.65 g - 4 cm



12--68972  
8.2 g - 3 cm



12--68971  
5.05 g - 3 cm



# Camélia

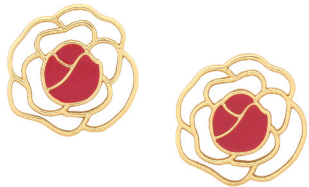
Email - Enamel  
Quartz  
Rhodonite  
Swarovski  
Laiton - Brass



15--64221  
7.8 g - 41.5 cm



12--69224  
10.45 g - 5 cm



12--69226  
6.6 g - 2 cm



12--69221  
4.3 g - 2.8 cm



12--69220  
3.1 g - 2 cm



12--69222  
3.4 g - 4.3 cm



12--69228  
3.65 g - 4.5 cm



12--69227  
8.45 g - 3.5 cm



**15--64222**  
11.85 g - 70 cm



**13--72802**  
7.85 g - 13.5 cm



**13--72801**  
4.15 g - 16.5 cm



**13--72800**  
2.45 g - 16.5 cm



12--69223  
3.7 g - 2 cm



19--63580  
2.6 g



19--63581  
3.55 g



19--63582  
4.75 g



15--64220  
6.6 g - 52 cm





# Estelle

Perle de verre - Glass bead

Swarovski

Laiton - Brass

Étain - Tin alloy



12--68912  
5.5 g - 5.5 cm



12--68913  
7.35 g - 8 cm



12--68918  
3.25 g - 5.5 cm



12--68917  
4.3 g - 4.5 cm



12--68911  
4.1 g - 5.5 cm



13--72670  
2.4 g - 16.5 cm



19--63480  
2.7 g



15--64110  
4.7 g - 42 cm



12--68914  
7.55 g - 5 cm



12--68910  
3.3 g - 3.5 cm



12--68915  
3.95 g - 3.5 cm



13--72673  
4.9 g - 16.5 cm



12--68916  
1.3 g - 1.5 cm



13--72672  
3.55 g - 32 cm



15--64111  
4.5 g - 39.5 cm



# Irene

Swarovski  
 Laiton - Brass  
 Etain - Tin alloy



12--69082  
 11.95 g - 8.5 cm



12--69083  
 15.45 g - 8.5 cm



12--69085  
 9.2 g - 4 cm



15--64171  
14.9 g - 39 cm



12--69081  
9.75 g - 9.8 cm



13--72741  
7.1 g - 16.5 cm



15--64173  
7.45 g - 42 cm



12--69086  
1 g - 1.3 cm



12--69080  
4.9 g - 6.5 cm



19--63512  
7.2 g



15--64170  
10.55 g - 14 cm



12--69084  
11.25 g - 3.5 cm



13--72742  
5.3 g - 16.5 cm



19--63511  
2.95 g



# Keira

- Pompon en tissu - *Fabric*
- Perles de kumasi - *Kumasi beads*
- Perles de culture - *Pearls*
- Perles de verre - *Glass bead*
- Coton ciré - *Cotton cord*
- Swarovski
- Jade
- Laiton - *Brass*
- Etain - *Tin alloy*



15--64151  
10.7 g - 42 cm



12--68996  
5.7 g - 7.5 cm



12--68997  
10.3 g - 6.5 cm



12--69000  
18.45 g - 6 cm



11--68998  
7.65 g - 9 cm



12--68998  
7.55 g - 9 cm





15--64150  
5.8 g - 38 cm



12--68990  
2.9 g - 3 cm



12--68995  
4.95 g - 4 cm



13--72710  
3.7 g - 16.5 cm



13--72712  
7.75 g - 17 cm



12--68991  
4.85 g - 2 cm



12--68992  
3 g - 3 cm



19--63500  
3.6 g



12--68993  
4.1 g - 5 cm



12--68994  
4.8 g - 4.5 cm



13--72711  
13.15 g - 16.5 cm



# Lorette

Agate  
 Nacre brune - *Brown MOP*  
 Swarovski  
 Laiton - *Brass*  
 Email - *Enamel*



15--64121  
 5.8 g - 40 cm



12--68933  
 4.2 g - 5 cm



12--68932  
 3.95 g - 3.5 cm



12--68934  
 5.45 g - 7 cm



13--72681  
 2.9 g - 16.5 cm



15--64120  
4.35 g - 45 cm



12--68930  
3.5 g - 3.5 cm



12--68937  
7.75 g - 6 cm



12--68931  
4.1 g - 4.5 cm



12--68938  
8.15 g - 5.5 cm



13--72682  
5.75 g - 13.5 cm



12--68936  
8.75 g - 5.5 cm



# Louison

Agate rouge - Red Agate  
 Nacre brune - Brown mother of pearl  
 Jaspe rouge - Red jasper  
 Laiton - Brass  
 Email - Enamel



15--64182  
 6 g - 45 cm



12--69104  
 5 g - 4.8 cm



12--69109  
 4.65 g - 6.8 cm



12--69107  
14.7 g - 7 cm



12--69110  
10.05 g - 7 cm



12--69103  
3.15 g - 3.5 cm



12--69108  
14.6 g - 5.5 cm



11--69103  
3.15 g - 3.5 cm



13--72761  
4.2 g - 16.5 cm



13--72763  
3.65 g - 16.5 cm



15--64181  
5.65 g - 44 cm



12--69105  
6 g - 5.5 cm



12--69106  
6.4 g - 6.7 cm



19--63551  
5.05 g



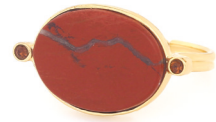
15--64180  
5.45 g - 38 cm



12--69101  
6.35 g - 2.2 cm



12--69100  
3.7 g - 1.2 cm



19--63550  
3.1 g



13--72760  
3.2 g - 16.5 cm





# Merry

Perles de culture - Pearls  
Swarovski  
Laiton - Brass



15--64131  
5.55 g - 40 cm



12--68950  
2.8 g - 2.5 c



12--68958  
4.55 g - 3 cm



13--72693  
8.7 g - 13.5 cm



15--64132  
7.3 g - 45 cm



12--68957  
8.75 g - 5.5 cm



12--68955  
4.85 g - 5.2 cm



**12--68959**  
6.25 g - 6 cm



**12--68960**  
8.1 g - 4.5 cm



**19--63521**  
3.4 g



**12--68954**  
2.4 g - 4.5 cm



**19--63520**  
2.25 g



**13--72690**  
2.45 g - 16.5 cm



**13--72692**  
2.85 g - 16.5 cm



**13--72691**  
2.35 g - 16.5 cm



15--64130  
3.6 g - 38 cm



12--68953  
4.9 g - 3 cm



12--68951  
3.75 g - 2.5 cm



11--68953  
5.8 g - 3 cm



# Naomie

Agate  
Lapis Lazuli  
Émail - Enamel  
Swarovski  
Laiton - Brass



12--69188  
21.65 g - 6.5 cm



12--69183  
15.55 g - 5 cm



12--69189  
2.9 g - 1.2 cm



12--69185  
16.75 g - 7 cm



15--64211  
6.9 g - 42 cm



12--69180  
4.5 g - 4.3 cm



12--69190  
3.5 g - 3.8 cm



12--69181  
7 g - 7 cm



15--64212  
11.4 g - 44.5 cm



19--63570  
4.6 g



12--69186  
17.2 g - 4.8 cm



13--72792  
12.15 g - 13.5 cm



15--64210  
5.75 g - 40 cm



13--72791  
3.2 g - 16.5 cm



13--72790  
3.4 g - 16.5 cm



12--69191  
10.4 g - 4.5 cm





# Neela

Swarovski  
 Agate  
 Émail - Enamel  
 Laiton - Brass



15--64192  
 4.95 g - 40 cm



12--69147  
 2.15 g - 2 cm



12--69150  
 9.25 g - 5.5 cm



12--69142  
 2.5 g - 1.5 cm



19--63530  
 2.05 g



19--63531  
 1.75 g



15--64191  
3.25 g - 42 cm



12--69149  
3.5 g - 5.5 cm



12--69145  
3 g - 3.5 cm



12--69140  
1.4 g - 0.08 cm



12--69141  
2.7 g - 2.5 cm



12--69143  
2.65 g - 1.5 cm



12--69146  
2.85 g - 2.5 cm



13--72772  
2.6 g - 16.5 cm



13--72770  
2.25 g - 16.5 cm



13--72773  
2.15 g - 16.5 cm



# Romy

- Agate
- Nacre noire - *Black mother of pearl*
- Grenat - *Garnet*
- Perle de rocaille - *Rocaille bead*
- Hematite
- Swarovski
- Laiton - *Brass*
- Etain - *Tin alloy*



12--69069  
23.3 g - 10 cm



12--69072  
10.35 g - 6.5 cm



12--69070  
15.7 g - 6.5 cm



15--64160  
4.05 g - 45 cm



12--69066  
5.95 g - 7 cm



12--69068  
8.6 g - 7 cm



13--72731  
4.5 g - 16.5 cm



12--69062  
2.75 g - 2.8 cm



15--64161  
5.3 g - 39 cm



12--69063  
3.75 g - 3.8 cm



12--69061  
3.3 g - 2.8 cm



13--72733  
3.55 g -16.5 cm



13--72735  
2.1 g -16.5 cm



13--72730  
2.75 g -16.5 cm



15--64162  
11.6 g - 70 cm



12--69071  
12.15 g - 4 cm



13--72734  
9.85 g -13.5 cm



19--63540  
3.35 g



# Talulah

Amazonite  
Aventurine verte - *Green aventurine*  
Nacre de palawan - *Palawan MOP*  
Swarovski  
Émail - *Enamel*



15--64012  
10 g - 44.5 cm



12--68585  
7.9 g - 4.5 cm



12--68584  
9.25 g - 7.6 cm



12--68583  
5.8 g - 5 cm



12--68581  
5.65 g - 5.5 cm



13--72580  
3 g - 16.5 cm





**15--64010**  
3.3 g - 41 cm



**12--68580**  
2.4 g - 2.5 cm



**12--68587**  
3.05 g - 3 cm



**13--72582**  
4.85 g - 13.5 cm



15--64011  
4.9 g - 39 cm



11--68586  
5.85 g - 4 cm



12--68586  
6.1 g - 4.5 cm



13--72581  
4.05 g - 16.5 cm

franck  
herval  
BIJOUX