



ORI  
TAO

COLLECTION 24.2







## - L'ESPRIT ORI TAO -

Découvrez Ori Tao, la marque de bijoux audacieuse et éclatante qui s'adresse à toutes les femmes à la recherche de l'équilibre entre style et confort, bien-être et modernité. Les parures Ori Tao sont le reflet d'une certaine liberté d'expression, une créativité sans cesse renouvelée qui favorise des créations lumineuses, raffinées et toujours contemporaines.

*Discover Ori Tao, the bold and dazzling jewelry brand that caters to all women seeking a balance between style and comfort, wellness and modernity.*

*Ori Tao jewelry is a reflection of a certain freedom of expression, a constantly renewed creativity which favors luminous creations, refined and always contemporary.*







# BAGYO

Bagyo est le terme Tagalog pour Typhon. Laiton plaqué argent et doré à l'or fin 18k.  
*Bagyo is the Tagalog word for Typhoon. Silver plated brass gilded with 18k gold.*







**15--31800**  
21.65 g - 46 cm



**12--32021**  
10.75 g - 4 cm



**12--32022**  
13.6 g - 4 cm



**12--32020**  
22.1 g - 4 cm





**12--32023**  
3.95 g - 1cm



**12--32027**  
3.95 g - 1cm



**13--69241**  
6.65 g - 18 cm



**13--69243**  
6.65 g - 18 cm



**13--69240**  
12.3 g - 18 cm



**13--69242**  
12.55 g - 18 cm



**19--40415**  
6 g



**19--40416**  
6 g





**15--31801**  
10.75 g - 4 cm



**12--32026**  
13.6 g - 4 cm



**12--32025**  
10.75 g - 4 cm



**12--32024**  
22.1 g - 4 cm

# BIWA

Un rang de perles de culture moulées, la collection est construite à partir de cette texture.  
Biwa (Lac au Japon), origine de la perle d'eau douce. Laiton plaqué argent et doré à l'or fin 18k.

*A row of molded cultured pearls, the collection is built around this texture.*

*Biwa (a lake in Japan), the origin of the freshwater pearl. Silver plated brass gilded with 18k gold.*







**15--31761**  
26.8 g - 42 cm



**12--31972**  
7.85 g - 3 cm



**12--31971**  
15.15 g - 3 cm



**13--69200**  
12.05 g - 17 cm



**12--31977**  
7.75 g - 3 cm



**12--31976**  
15.15 g - 3 cm



**13--69202**  
11.95 g - 17 cm



**15--31763**  
26.2 g - 42 cm



**15--31760**  
29.45 g - 54 cm



**12--31970**  
17.75 g - 4 cm



**13--69201**  
22.05 g - 53 cm



**12--31973**  
11.55 g - 2 cm



**19--40395**  
7.6 g



**19--40396**  
3.5 g





**15--31762**  
28.55 g - 54 cm



**12--31975**  
18.2 g - 4 cm



**13--69203**  
22.05 g - 53 cm



**12--31978**  
11.8 g - 2 cm



**19--40397**  
7.55 g



**19--40398**  
3.45 g

# CLOVER

Le trèfle est considéré comme un symbole de chance, et ceux qui en trouvent un sont censés voir leur voeu exaucé. C'est pourquoi il est souvent offert en tant que bijou « porte bonheur » à porter au quotidien. Laiton plaqué argent et doré à l'or fin 18k.

*Clover is considered as a symbol of luck. Those who find one are supposed to have their wish granted. That's why it is often given as a «lucky charm» piece of jewelry to wear every day. Silver plated brass gilded with 18k gold.*







**13--69191**  
4.5 g - 17 cm



**19--40390**  
3.35 g



**15--31751**  
11.1 g - 42 cm



**13--69190**  
13.1 g - 17 cm



**13--69194**  
7.9 g - 18 cm



**15--31753**  
11.1 g - 42 cm



**19--40391**  
3.35 g



**13--69193**  
4.5 g - 17 cm



**13--69195**  
7.9 g - 18 cm



**13--69192**  
13.1 g - 17 cm



**15--31750**  
10.1 g - 45 cm



**12--31950**  
14.3 g - 7 cm



**12--31951**  
14.95 g - 7 cm



**12--31953**  
5.9 g - 3 cm



**12--31952**  
10.45 g - 5 cm



**12--31954**  
3.45 g - 1 cm





**12--31955**  
14.3 g - 8 cm



**12--31956**  
14.95 g - 7 cm



**12--31959**  
3.45 g - 1 cm



**12--31957**  
10.45 g - 4 cm



**12--31958**  
5.9 g - 3 cm



**15--31752**  
10.1 g - 45 cm

# DANDY

Elégance et raffinement, le dandysme est un courant de mode et de société venant de l'Angleterre de la fin du XVIII. Laiton plaqué argent et doré à l'or fin 18k.

*Elegance and refinement, dandyism is a fashion and social movement from late 18th century England. Silver plated brass gilded with 18k gold.*







**11--3193**  
15.75 g - 3 cm



**12--3193**  
14.25 g - 3 cm



**11--31940**  
21.65 g - 4 cm



**12--31940**  
20.35 g - 5 cm

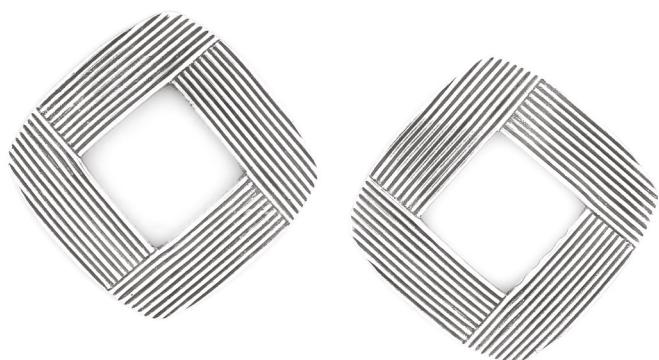


**12--31941**  
26.25 g - 7 cm





**15--31740**  
24.9 g - 46 cm



**12--31942**  
20.2 g - 4 cm



**13--69180**  
20.6 g - 56 cm





**15--31741**  
23.2 g - 42 cm



**12--31944**  
8.15 g - 3 cm



**19--40386**  
6.6 g



**19--40385**  
11.5 g



**13--69181**  
17.35 g - 18 cm

# DISCO

Boules à Facettes tout en transparence et légèreté. Laiton plaqué argent et doré à l'or fin 18k.  
*Facet Balls in transparency and lightness. Silver plated brass gilded with 18k gold.*







**12--31992**  
12.85 g - 3 cm



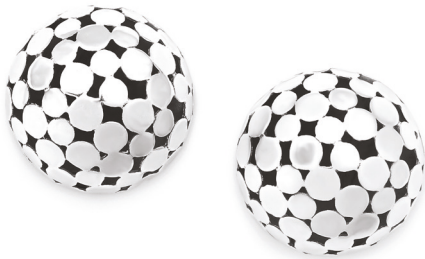
**12--31995**  
12.8 g - 3 cm



**11--31990**  
24.1 g - 3 cm



**11--31993**  
24.85 g - 3 cm



**12--31990**  
22.5 g - 3 cm



**12--31993**  
23.2 g - 3 cm



**13--69210**  
21.75 g - 56 cm



**13--69211**  
18.95 g - 56 cm



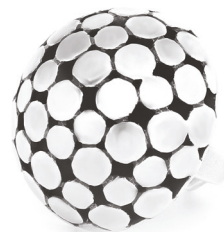
**15--31770**  
24.45 g - 45 cm



**11--31991**  
32.55 g - 6 cm



**12--31991**  
31.95 g - 6 cm



**19--40400**  
12.9 g





**15--31771**  
22.7 g - 45 cm



**11--31994**  
30.85 g - 6 cm



**12--31994**  
32.2 g - 6 cm



**19--40401**  
12.75 g

# JIMILI

Des demi-bulles de métal qui reflètent la lumière. Une touche de matière : Lapis Lazuli & Agate illumine cette collection. Laiton plaqué argent ou doré à l'or fin patiné 18k.  
*Half-metal bubbles that reflect light. A touch of material: Lapis Lazuli & Agate illuminate this collection.  
Silver plated brass or brass gilded with 18k patinated gold.*





**12--32060**  
14.4 g - 4 cm



**12--32064**  
14.4 g - 4 cm



**12--32062**  
11.9 g - 4 cm



**12--32066**  
11.9 g - 4 cm



**12--32061**  
6.25 g - 2 cm

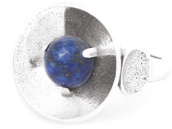


**12--32065**  
6.25 g - 2 cm





**15--31830**  
16.7 g - 42 cm



**19--40430**  
7.3 g



**13--69270**  
14.55 g - 15 cm



**10--26240**  
8.1 g - 45 cm



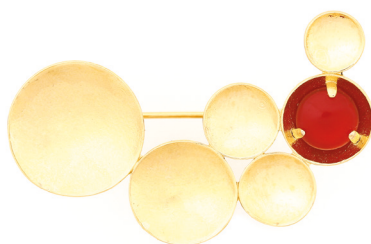
**15--31831**  
16.7 g - 42 cm



**19--40431**  
7.3 g



**13--69271**  
14.55 g - 15 cm



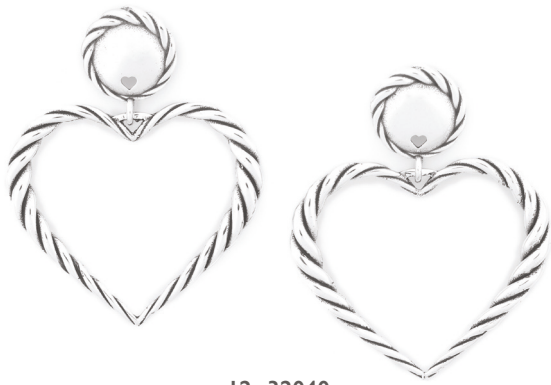
**10--26241**  
8.1 g - 45 cm

# MERIDA

Une ligne coeur, légère tout en torsade. Laiton plaqué argent et doré à l'or fin 18k.  
*A heart line, light while twisted. Silver plated brass gilded with 18k gold.*







**12--32040**  
19.2 g - 5 cm



**15--31820**  
29.4 g - 42 cm



**12--32044**  
6.05 g - 3 cm



**19--40426**  
3.1 g



**15--31822**  
29.4 g - 42 cm



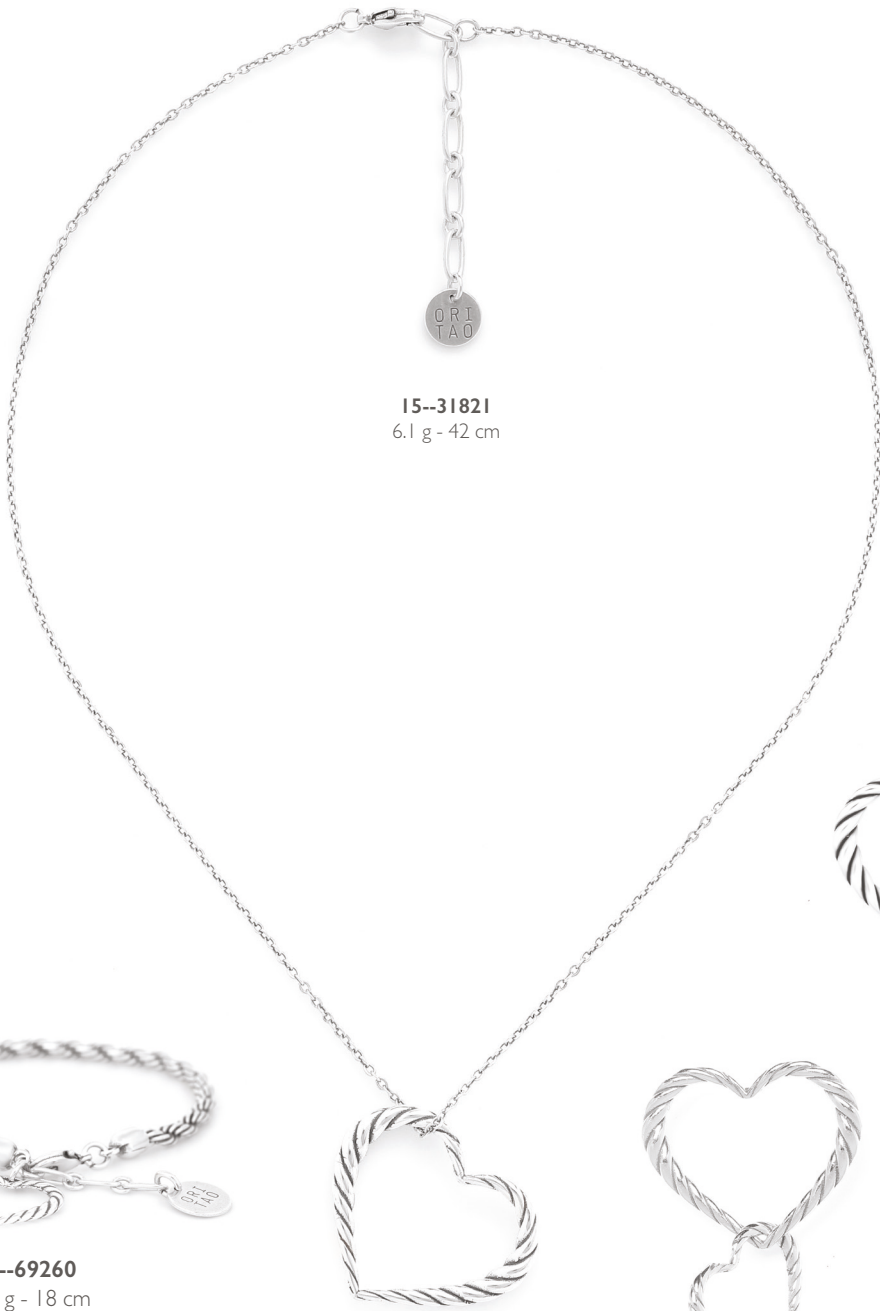
**12--32045**  
19.2 g - 5 cm



**19--40428**  
3.1 g



**12--32049**  
6.05 g - 3 cm



**15--31821**  
6.1 g - 42 cm



**19--40425**  
4.5 g



**12--32041**  
7.1 g - 3 cm



**12--32042**  
9.45 g - 4 cm



**13--69260**  
10.6 g - 18 cm



**12--32043**  
11.85 g - 5 cm



**13--69262**  
19.55 g - 58 cm



**15--31823**  
6.1 g - 42 cm



**19--40427**  
4.5 g



**12--32046**  
7.1 g - 3 cm



**12--32047**  
9.45 g - 4 cm



**13--69261**  
10.6 g - 18 cm



**12--32048**  
11.85 g - 5 cm



**13--69263**  
19.55 g - 58 cm



# MIYAKO

Gouttes pures et texturées soulignées d'un éclat de nacre. Laiton plaqué argent et doré à l'or fin 18k.  
*Pure and textured drops highlighted by a shine of mother of pearl. Silver plated brass gilded with 18k gold.*





**15--31790**  
28 g - 45 cm



**15--31791**  
28 g - 45 cm



**12--32011**  
5.75 g - 4 cm



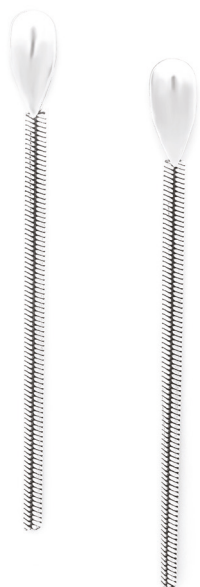
**12--32010**  
13.95 g - 6 cm



**12--32014**  
13.95 g - 6 cm



**12--32015**  
5.75 g - 4 cm



**12--32012**  
11.4 g - 10 cm



**12--32013**  
15.4 g - 6 cm



**12--32017**  
15.4 g - 6 cm



**12--32016**  
11.4 g - 10 cm



**13--69230**  
11.85 g - 56 cm



**13--69231**  
11.85 g - 56 cm



**19--40410**  
3.8 g



**19--40411**  
3.8 g



# PALMSRING

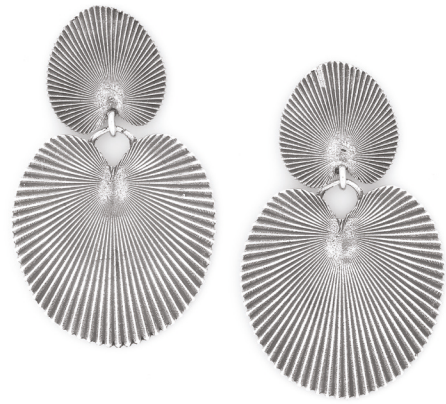
Elégance graphique inspirée d'une feuille de palmier. Laiton plaqué argent et doré à l'or fin 18k.  
*Graphic elegance inspired by a palm leaf. Silver plated brass gilded with 18k gold.*







**15--31810**  
25.9 g - 46 cm



**12--32033**  
16.7 g - 5 cm



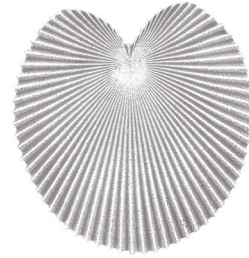
**15--31811**  
25.9 g - 46 cm



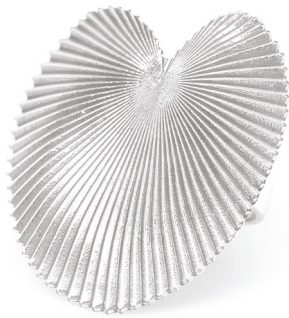
**12--32037**  
16.7 g - 5 cm



**12--32030**  
17.5 g - 3 cm



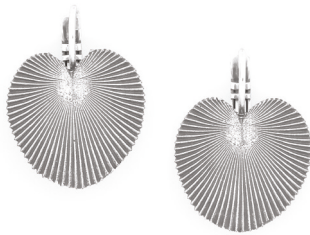
**11--32030**  
15.3 g - 3 cm



**19--40420**  
9.45 g



**12--32031**  
7.25 g - 3 cm



**12--32032**  
5.4 g - 2 cm



**13--69250**  
6.15 g - 17 cm



**11--32034**  
15.3 g - 3 cm



**12--32034**  
17.5 g - 3 cm



**12--32035**  
7.25 g - 3 cm



**19--40421**  
9.45 g



**13--69251**  
6.15 g - 17 cm



**12--32036**  
5.4 g - 2 cm



# VENIN

La délicatesse du serpent et sa goutte de venin. Laiton plaqué argent, doré patiné à l'or fin 18K.  
*The delicacy of the snake and its drop of venom. Silver plated brass gilded with patinated 18K gold.*





**15--31780**  
12.05 g - 42 cm



**12--32000**  
20.1 g - 5 cm



**13--69220**  
14.2 g - 63 cm



**15--31782**  
12.05 g - 42 cm



**12--32002**  
20.1 g - 5 cm



**13--69221**  
14.2 g - 63 cm



**15--31781**  
10.6 g - 42 cm



**12--32001**  
12.3 g - 6 cm



**12--32004**  
10.2 g - 6 cm



**12--32006**  
7.6 g - 2 cm



**19--40405**  
3.9 g





**15--31783**  
10.6 g - 42 cm



**12--32005**  
10.2 g - 6 cm



**12--32003**  
11.95 g - 6 cm



**19--40406**  
3.9 g



**12--32007**  
7.6 g - 2 cm

# TIMELESS

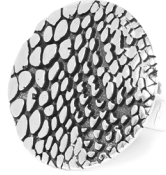
Pour plus de simplicité, nos « best » deviennent des permanents.  
*For a better convenience, our « best » items now become timeless items.*



# LES BAGUES - RINGS



**19TL40240**  
16.75 g - 54 cm



**19TL40241**  
8.45 g - 54 cm



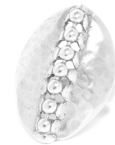
**19TL40250**  
10.85 g - 54 cm



**19TL40252**  
4.2 g - 54 cm



**19TL40281**  
6.45 g - 52 cm



**19TL40293**  
6.05 g - 54 cm



**19--40100**  
2 g - 54 cm



**19--40101**  
2 g - 54 cm



**19--40102**  
2 g - 54 cm



**19--40103**  
2 g - 54 cm



**19--40104**  
2 g - 54 cm



**19--40105**  
2 g - 54 cm



**19--40131**  
6.05 g - 54 cm



**19--40132**  
6 g - 54 cm



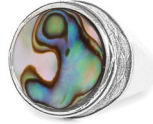
**19--40134**  
6 g - 54 cm



# LES BAGUES - RINGS



**19--40135**  
5.96 g - 54 cm



**19--40190**  
13.3 g - 56 cm



**19--40191**  
12.65 g - 54 cm



**19--40192**  
13.3 g - 56 cm



**19--40193**  
13.3 g - 56 cm



**19--40195**  
12.65 g - 54 cm



**19--40196**  
13.6 g - 56 cm



**19--40197**  
12.65 g - 54 cm



**19--40198**  
12.65 g - 54 cm

**NEW**



**19--40322**  
3.35 g - 54 cm

**NEW**



**19--40331**  
4.5 g

**NEW**



**19--40371**  
6.2 g



**I2TL30714**  
13.9 g - 6 cm



**I2TL30715**  
8.75 g - 3 cm



**I2TL30721**  
8.05 g - 2 cm



**I2TL30723**  
12.65 g - 5 cm



**I2TL30745**  
7.2 g - 3 cm



**I2TL30781**  
6.95 g - 7 cm



**I2TL30794**  
16.25 g - 4 cm



**I2TL30795**  
8.1 g - 3 cm



**I2TL30801**  
10.15 g - 4 cm



**I2TL30802**  
4.9 g - 2 cm



**I2TL30803**  
6.3 g - 4 cm



**I2TL30813**  
12 g - 5 cm

# LES BOUCLES - EARRINGS



**12--30560**  
10.7 g - 4 cm



**12--30561**  
10.7 g - 4 cm



**12--30562**  
10.7 g - 4 cm



**12--30563**  
10.7 g - 4 cm



**12--30564**  
10.7 g - 4 cm



**12--30565**  
10.7 g - 4 cm



**12--30660**  
7.95 g - 3 cm



**12--30661**  
7.05 g - 3 cm



**12--30663**  
9.5 g - 3 cm



**12--30662**  
11.45 g - 3 cm

**NEW**



**12--30854**  
8.85 g - 4 cm

**NEW**



**12--30856**  
10.4 g - 4 cm



# LES BOUCLES - EARRINGS

NEW



**12--30866**  
12.55 g - 4 cm

NEW



**12--30867**  
5.5 g - 3 cm

NEW



**12--31915**  
7.5 g - 3 cm

NEW



**12--31917**  
13.4 g - 6 cm



**13TL59990**  
32 g - 58 cm



**13TL69011**  
23.7 g - 58 cm



**13TL69043**  
18.45 g - 56 cm



**13TL69050**  
8.1 g - 17 cm



**13TL69061**  
27.3 g - 56 cm



**13--42061**  
17.2 g - 20 cm



**13--42062**  
16.08 g - 20 cm



**13--42063**  
23.26 g - 20 cm



**13--42064**  
17.58 g - 20 cm



**13--42065**  
10.68 g - 20 cm



**13--51161**  
13 g - 58 cm



**13--51162**  
16 g - 62 cm



**13--51163**  
13 g - 58 cm



**13--51164**  
16 g - 62 cm



**13--51167**  
13 g - 58 cm

# LES BRACELETS - BRACELETS



**13--51200**  
18.06 g - 58 cm



**13--59660**  
27.45 g - 20 cm



**13--59661**  
52.95 g - 20 cm



**13--59662**  
36 g - 20 cm



**13--59663**  
28.3 g - 20 cm



**13--59830**  
10.1 g - 55 cm



**13--59831**  
10.1 g - 55 cm



**13--59832**  
10.1 g - 55 cm



**13--59833**  
10.1 g - 55 cm



**13--59834**  
10.1 g - 55 cm



**13--59835**  
10.1 g - 55 cm



**13--59851**  
14.95 g - 58 cm



**13--59853**  
13.9 g - 58 cm



**13--59854**  
14.3 g - 58 cm



**13--59855**  
14.6 g - 58 cm





**13--59924**  
14.35 g - 18 cm



**13--59927**  
14.35 g - 18 cm



**13--59928**  
14.35 g - 18 cm



**13--59930**  
25.65 g - 56 cm



**13--59931**  
25.65 g - 56 cm



**13--59932**  
15.8 g - 62 cm



**13--59933**  
15.8 g - 62 cm



**13--59934**  
15.05 g - 56 cm



**13--59935**  
15.05 g - 56 cm

**NEW**



**13--69158**  
15.2 g - 17 cm

# LES COLLIERS - NECKLACES



**15TL31471**  
5.55 g - 42 cm



**15TL31503**  
6.7 g - 42 cm



**15--31140**  
56.75 g - 42 cm



**15TL31600**  
8.2 g - 42 cm



**15--31141**  
117.95 g - 42 cm



**15--31142**  
82.5 g - 42 cm



**15--31143**  
62.45 g - 42 cm



**15--42061**  
35.34 g - 42 cm



**15--42064**  
35.74 g - 42 cm



**15--42062**  
32.06 g - 42 cm



**15--42065**  
19.72 g - 42 cm



**15--42066**  
65.2 g - 42 cm





## CONTACTS

### FRANCE

279, Avenue d'Allemagne  
ZA ALBASUD  
82000 MONTAUBAN  
Tel: +33 (0)5 63 23 03 95  
[info@leschamanes.com](mailto:info@leschamanes.com)

### EXPORT / DOM TOM

279, Avenue d'Allemagne  
ZA ALBASUD  
82000 MONTAUBAN  
Tel: +33 (0)5 63 31 86 71  
[laurence@leschamanes.com](mailto:laurence@leschamanes.com)



[www.oritao.com](http://www.oritao.com)